

CALCULATION OF A NIGHTTIME-POPULATION MAP BASED ON FREE DATA



Morten Fuglsang
SWECO
MortenWinther.
Fuglsang@sweco.dk

When the first authoritative data was released, free access was given to registries like the building registry (BBR). However, statistical data like the nighttime-population is still not free. This analysis shows how we can use dasymetric mapping to dis-aggregate municipality population data into BBR housing units, producing an estimated nighttime-population map. The results produced show that the proposed model has a general overrepresentation of the population, but despite that, this free dataset calculated here, should be usable in many cases where an estimate is adequate.

Keywords: dasymetric mapping, nighttime population, registry data, housing units.

When the first authoritative data was released in 2011, free access was given to registries like the building registry (BBR) and the company registry (CVR). This has meant that the use of these data has increased in many different companies, helping them to make informed decisions. With this increased use, a desire to be able to use population data has grown. Unfortunately, the first release did not include data from the statistical office in Denmark (DST), which still required payment.

This paper will focus on the calculation of a nighttime-population dataset. Nighttime-population is defined as the number of inhabitants that resides at a location – in contrast to the daytime-population map stating where people work. The mapping effort here will focus on calculation of point data, with results presented summarized in the standardized Danish grid net. This format has become popular as agglomerative unit for socioeconomic data in recent years, and is therefore a well proven unit of measure.

A country-wide nighttime-population dataset from DST is currently valued at about 59.000 dkk, which is a significant price to pay in order to use

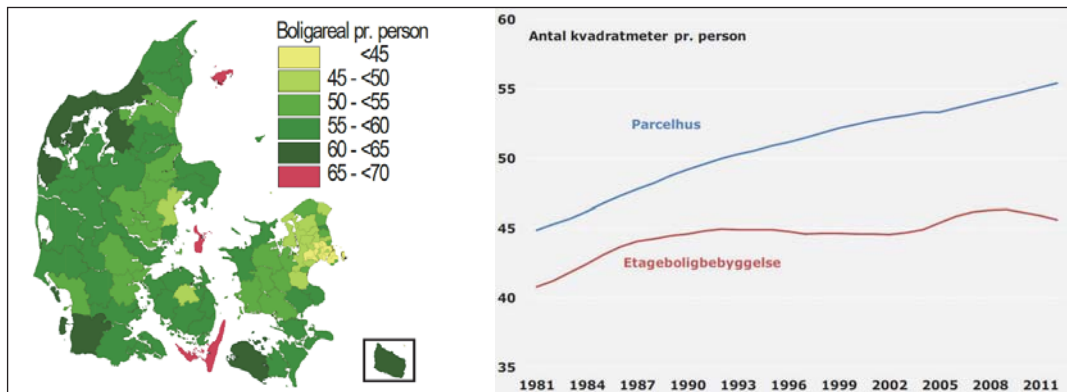


Figure 1. Area pr. individual from DST 2011 (Left), and Development of area pr. Individual from BRF (Heining 2013) (Right).

these data in small and medium scale companies. The method proposed here uses the municipality population statistics – which is freely available from DST, combined with the housing-unit table from BBR. Based on dasymetric mapping the population of each municipality is distributed into the housing units. The result will be evaluated against the official nighttime-population map from DST in order to assess the usability of the map produced.

THEORY

The conceptual idea behind the conducted analysis was based on the calculation of how many square meters of living space each individual statistically have in different municipalities. This has been investigated in many different cases. The case that formed the idea for this analysis was from DST in 2011. The topic has remained in focus since – as late as in September 2016 by Gadberg 2016, where it is documented that the area pr. Individual has increased by about 20% since 1981.

The work conducted by (DST 2011) focuses on the calculation for each municipality individually. This was determined as the offset for this analysis, since it was shown by (DST 2011), that there are quite large regional differences.

The theoretical framework for the analysis was based on the concept of dasymetric mapping. This is a tool for dis-aggregating data, creating more

detailed choropleth maps by distributing observations into smaller classes (Tapp 2010). It is an often used framework for distributing population measurements, examples include research by (Sleeter & Gould 2007) and (Eicher & Brewer 2001).

$$1. \hat{y}_t = \sum_{s=1}^n \frac{y_s A_{s \cap z}}{A_s}$$

Where :

\hat{y}_t = Estimated count in target zone

y_s = Count of the source zone

$A_{s \cap z}$ = Area of intersection between source and t

A_s = The area of the source zone

n = The number of zones which z overlaps (Mennins & Hultgren 2006)

The main mathematical expression of the concept can be seen in eq.

The classic result of a dasymetric calculation can be seen in figure 2, where the rough population in districts is dis-aggregated into smaller units based on land use types.

The analysis extends the concept, by not looking at land use zones as targets for the dis-aggregation, but on housing units which are located by their address points. We use the unit table from BBR, where relevant information about usage, size etc. are present. In order to only get units where people live, we disregard industry, service and other classes, and only use the types specified in table 1.

The work conducted here is as a combination of the dasymetric methodology, the statistical measure of 'square meters pr. Individual' and the

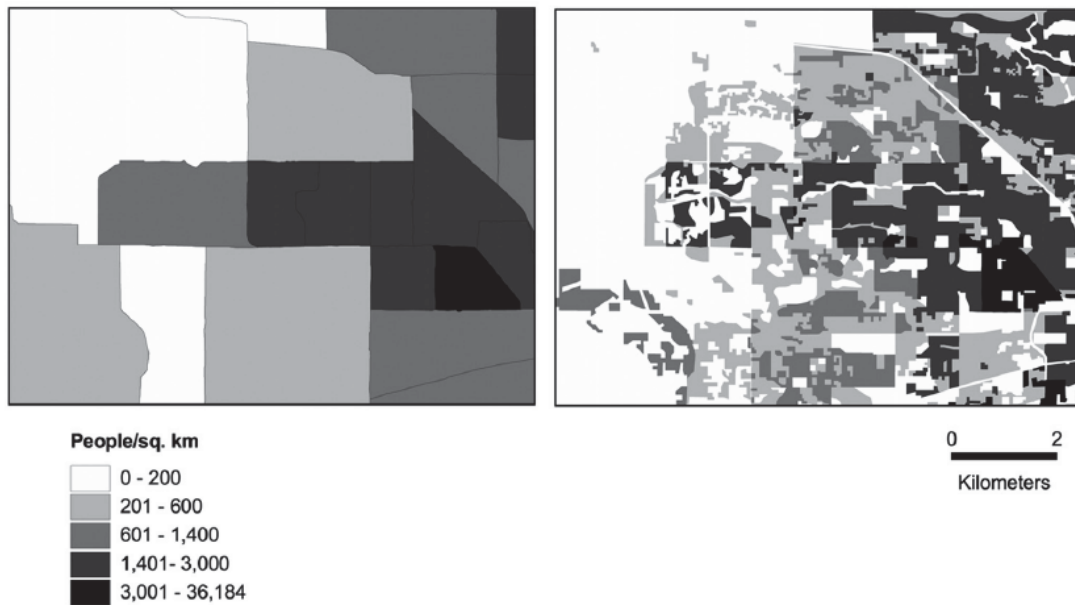


Figure 2. Standard dasymetric analysis result, from general districts to smaller units of measure. (Mennis & Hultgren 2006).

110	Stuehus til landbrugsejendom
123	Fritliggende enfamilieshus (parcelhus).
130	Række-, kæde- eller dobbelthus (lodret adskillelse mellem enhederne).
140	Etageboligbebyggelse (flerfamiliehus, herunder tofamiliehus (vandret adskillelse mellem enhederne)).
150	Kollegium
160	Døgninstitution (plejehjem, alderdomshjem, børne- eller ungdomshjem).
190	Anden enhed til helårsbeboelse

Table 1. BBR usage codes used for the calculation (BBR.dk 2016).

housing registry. When this is put together, we create an estimated nighttime-population map based solely on open data.

METHODOLOGY

The first task of conducting this analysis was to gather the relevant data. The population data was acquired through 'Statistikbanken' from DST, where the series 'FOLK1A: Folketal den 1. i kvartalet efter område, køn, alder og civilstand' was downloaded and stored in a PostgreSQL database for further processing. Secondly, the housing unit table was collected from Sweco, where these data are available with a weekly update cycle. Some auxiliary data was required for

conducting the calculation and preparation of the final product – this was the municipality map from 'Danmarks Administrative Geografiske Inddeling' (DAGI), and the standardized Danish grid net (DST 2012) created with the 'Gridfactory' application. After collecting these data, it was all loaded and stored in the database, and processing could begin. This was computed in the following steps:

- The total sum of housing square meters for the selected codes was calculated for each municipality – providing a total sum pr. municipality.
- This municipality sum was then divided by the population of the municipality, based on

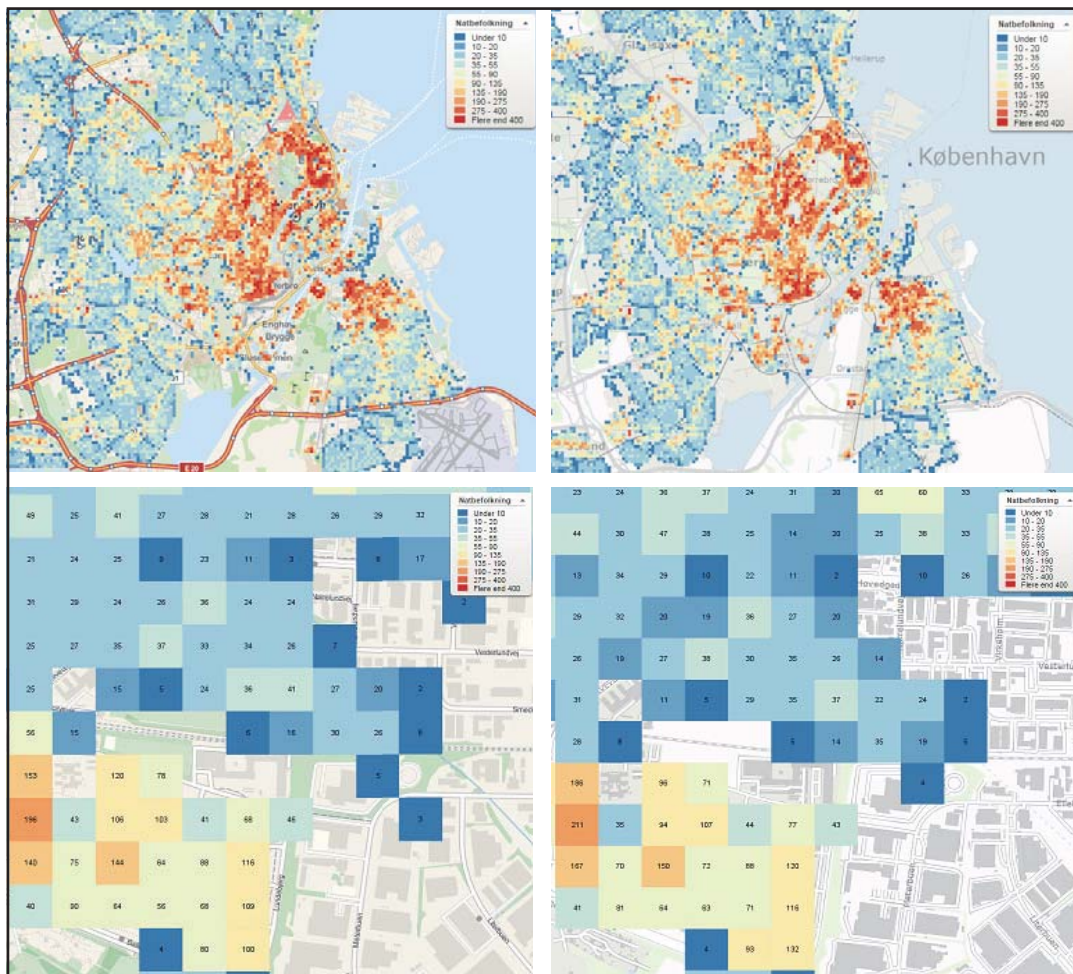


Figure 3. DST night population (Right column), calculated results (Left column).

the statistics from DST. This calculates the square meters pr. Individual in each municipality.

- The calculated value pr. Individual was then compared to each housing unit. If the value pr. individual was 50 square meters, and a given house was 120 square meters, the model assigns 2,4 individuals to the house.
- Using these values calculated for each house, the total pr. Grid cell is summarized using a spatial join between the point based house data and the grid-net. This creates a total population pr. Grid cell result, that is comparable to the 'Natbefolkning' product from DST.

RESULTS

In figure 3, a comparison of the obtained results from the dasymetric mapping analysis and the official nighttime-population from DST is presented. Data is classified into the same classes between the two datasets, making them visually comparable. It can be seen, that the patterns observed, are quite equal between the two sets of maps.

DISCUSSION

In order to analyze the accuracy of the calculation, the official nighttime-population map from DST was used. There is about 8 months of time difference between the DST map and this calculation, meaning

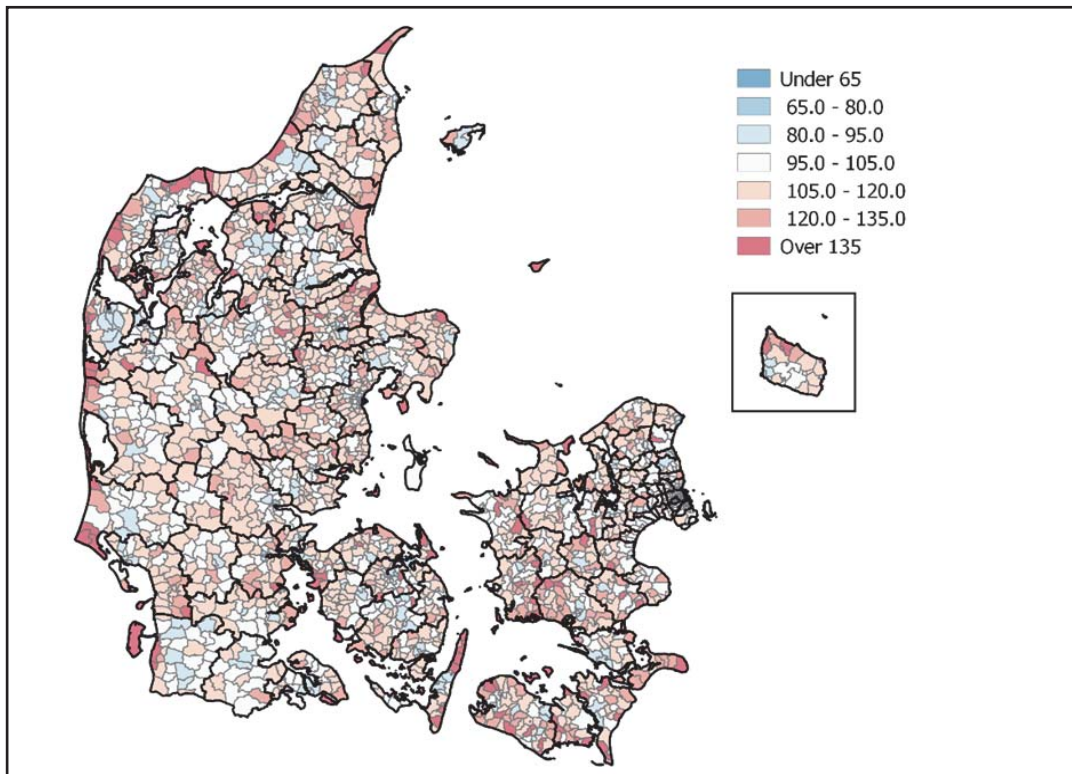


Figure 4. Accuracy assessment – low values indicate underrepresentation in the result, high values an overrepresentation.

that the results are produced using more recent data, than what was used for the DST map.

Since the calculation uses municipality totals, calculation of uncertainty at this level is useless – The accuracy pr. Municipality was $< \pm 1\%$. It was evident that this was not correct, since the uncertainty is expected to be higher based on visual comparison. Therefore, a third reference dataset was used – the church district map, also from DAGI, which provides smaller units of measurements than the municipalities.

The values from the grid net centroids for both the result and the official map from DST where intersected with the church district map, to calculate an accuracy percentage. This was based on the population sum for both datasets. The result of this assessment can be seen in figure 4.

If the sum of all districts is calculated, it shows an overall accuracy of the result of about $+10\%$, meaning that the model over-represents the population. As it

can be seen in figure 4, the districts, where the high overrepresentation is present, are in the coastal regions, where this simplistic model appears to have its biggest problems.

If we focus on the urban areas, it can be seen from Copenhagen in figure 5, that the results here are more accurate. It is visible, that the greatest part of the districts all falls in the 95 – 105 % class, meaning that the deviation of the result from the observed data is small. Therefore, it appears that the model proposed has a better accuracy in the denser populated areas.

CONCLUSION

We can conclude based on the work conducted, that it is possible to create an estimated nighttime-population density map using the dasymetric technique on housing unit level.

With a general uncertainty of about 10% , it is clear, that the result can never be used as anything

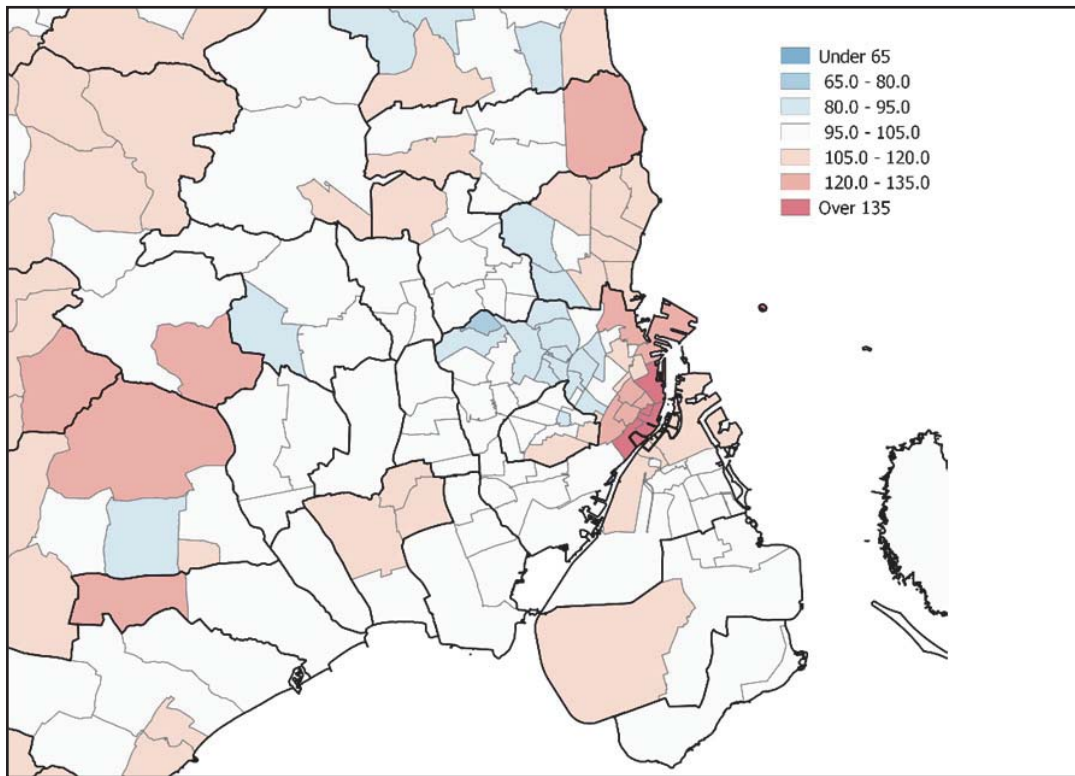


Figure 5. Subset of the accuracy assessment from the greater Copenhagen area.

else than a rough estimate on a local population. It is also evident that an extension of the model incorporating housing unit types might be a logical next step in the development. Moreover, the regional differences in the country could be addressed, since the uncertainty is unevenly distributed. Therefore, the model could be improved in numerous ways, making the results better and more accurate.

In relation to the general usability of the map, it can be concluded that the proposed method gives an estimate that is quite accurate, and might very well be usable enough for simple analyses, where an estimate is sufficient, without having to pay for the official nighttime-population dataset.

ACKNOWLEDGEMENT

Consent for using the nighttime population map from DST in the comparison, was given from a Spatial Suite customer who have purchased these data. The customer wishes to remain anonymous.

References

- BBR (2016): "Enhedsanvendelse". <http://bbr.dk/enhedsanvendelse/0/31> [Accessed online 15.09.2016]
- DST (2011): "Mest plads på landet" Nyt fra Danmarks Statistik nr. 354. August 2011
- DST (2012): "Faktaark-om-Kvadratnettet-V-2" [Accessed online 13.09.2016]
- Eicher, C & Brewer, C (2001): "Cartography and Geographic Information Science, 11Jl.28, No.2, 2001, pp.125-138"
- Gadeberg, L (2016): 'Vores boliger vokser – familierne skrumpes' in *Bolius*, Bedre hjem nr. 5 2016 [Accessed online 10.09.2016]
- Heinig, C.H. (2013): "Vi sluger flere og flere kvadrater i boligen" Realkredit Danmark, Risikostyring [Accessed online 13.09.2016]
- Mennis, J & Hultgren, T (2006): "Cartography and Geographic Information Science, Vol. 33, No. 3, 2006, pp. 179-194"
- Sleeter, R & Gould, M (2007): "Geographic Information System Software to Remodel"
- Population Data Using Dasymetric Mapping Methods. USGS Techniques and Methods 11-C2
- Tapp, A (2010): "Cartography and Geographic Information Science, Vol. 37, No. 3, 2010, pp. 215-228"

REVIEWED

ADVANCING COASTAL CLIMATE ADAPTATION IN DENMARK BY LAND SUBSIDENCE MAPPING USING SENTINEL-1 SATELLITE IMAGERY

Carlo Sørensen
DTU Space
carlos@space.dtu.dk

Niels H. Broge
Danish Ministry of Energy,
Utilities and Climate
nihbr@efkm.dk

Mads R. Mølgaard
Geo
mrm@geo.dk

Joanna F. Levinsen
Danish Agency for Data
Supply and Efficiency
jofle@sdfc.dk

Nik Okkels
Geo
nio@geo.dk

Per Knudsen
DTU Space
pk@space.dtu.dk

There are still large uncertainties in projections of climate change and sea level rise. Here, land subsidence is an additional factor that may adversely affect the vulnerability towards floods in low-lying coastal communities. The presented study performs an initial assessment of subsidence mapping using Sentinel-1 satellite imagery and leveling at two coastal locations in Denmark. Within both investigated areas current subsidence rates of 5-10 millimeters per year are found. This subsidence is related to the local geology, and challenges and potentials in bringing land subsidence mapping and geology into climate adaptation are discussed in relation to perspectives of a national subsidence monitoring system partly based on the findings from the two coastal locations. The current lack of subsidence data and a fragmentation of geotechnical information are considered as hindrances to optimal adaptation in Denmark. A simple decision support system is suggested to gradually implement subsidence monitoring and to include geotechnical information in coastal climate adaptation to the benefit of municipalities and other stakeholders.

Keywords: Land subsidence, geotechnical archives, geological models, Sentinel-1, coastal climate impacts, decision support, adaptation, precision leveling

Climate change adversely impacts society and adaptation is a global challenge faced by all with both local and international dimensions (UNFCCC 2016). The vulnerability and impacts from floods and inundation along many coasts are

exacerbated by sea level rise, more extreme sea levels, and a potential increase in the frequency and intensity of storms (IPCC 2013; IPCC 2014; Wong et al, 2014). Regional variations from the global relative mean sea level rise e.g., due to ocean circulation patterns, interannual and decadal variability (e.g. Zhang et al, 2012), glacial isostatic adjustment (e.g. Peltier et al, 2015), and the proximity to melting icecaps (e.g. Gomez et al, 2010) scope many regional sea level model studies (e.g. Slangen et al, 2016). Still, large uncertainties in the sea level rise expected in this century (Grinsted et al, 2015; Jevrejeva et al, 2014) implicate regional coastal impacts and levels of adaptation required (Dronkers and Stojanovic, 2016). Furthermore, natural or human-induced land subsidence must be accounted for locally (Nicholls, 1995) to evaluate the potential extent and depth of future floods from storm surges and extreme precipitation events (Vognsen et al, 2013; Sorensen et al, 2016). Relative sea level changes are relevant in climate impact studies, and even a few millimeters of land subsidence a year will exacerbate the current global mean rate of sea level rise of c. 3.4 mm/y (Nerem et al, 2010; <http://sealevel.colorado.edu/>) significantly in terms of vulnerability to floods.

Whereas land subsidence, due e.g. to gas or groundwater extraction, has been investigated and related to coastal floods abroad, little attention has been given to this issue in Denmark. There are two main reasons for this: first, subsidence has not been considered a challenge and, secondly, there is a general lack of data on height variations in terms of repeated measurements to well-established points of reference. However, Broge et al (2013) found the most low-lying Danish areas to be also the most susceptible to subsidence from a screening of existing leveling data, and the authors ascribed this to soil and groundwater processes in landfills and soft sediments. Coastal towns and communities may thus become more vulnerable to floods than anticipated from sea level rise alone, and ongoing or future land subsidence should be accounted for in climate adaptation in Denmark,

too. This will, at the least, serve the purpose to limit uncertainties of climate impacts. This is particularly relevant as the ten largest Danish cities are located by the coast and 80% of the population lives less than three kilometers from the ocean. Also, many towns are of medieval origin and have long storm surge records (Piontkowitz and Sorensen 2011).

Objectives of this paper are to make an initial assessment of Sentinel-1 satellite imagery for subsidence mapping in Denmark and to compare this with leveling data at two coastal locations. In addition, geological information from the two locations are collected, interpreted, and related to the subsidence data. Based on this, the use of information on land subsidence and geology is discussed in relation to climate adaptation and, furthermore, perspectives of a national subsidence monitoring system partly based on the findings from the two coastal locations are discussed.

DATA AND METHODS

Following a presentation of the two study locations, methods for subsidence monitoring and geological model preparation are presented together with an overview of data used.

Study locations

Denmark borders the North Sea and the Baltic Sea (see Figure 1), and the Danish landscapes are predominantly a product of the Quaternary Fennoscandian glaciations with glacial tills and meltwater deposits; postglacial Aeolian, freshwater, and marine deposits (Pedersen et al, 2011). The Pre-Quaternary surface is found at varying depths (Binzer and Stockmarr, 1994).

The two study locations 'Thyboron' and 'Aarhus' (see Figure 1b and Figure 1c) have been selected based on an initial suspicion of ongoing land subsidence and from the fact, that both areas become increasingly susceptible to floods from storm surges with sea level rise. Leveling data collected from two or more campaigns over the locations exist to gain knowledge about recent

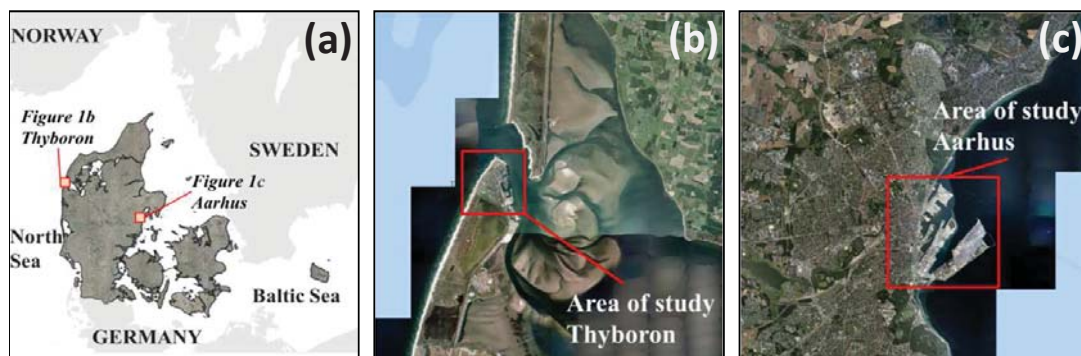


Figure 1. Map of Denmark (a) with the Thyboron (b) and Aarhus (c) study locations indicated.

elevation changes and to compare this with satellite-based results. 'Thyboron' is a fishing town located on a sandy barrier towards the highly energetic North Sea coast. Protected by large sea dikes towards the North Sea, the town is currently most vulnerable to floods from the adjacent Limfjord due to a land elevation of only 1.0-2.5 m DVR90 (Danish datum approximately equivalent to mean sea level in 1990). Rapid urbanization has occurred on reclaimed areas on the former fjord bottom since the 1960s in a direction from north to south (Sorensen et al, 2016). The 'Aarhus' study location contains quays and breakwaters. The Aarhus breakwater construction was carried out over a ten-year period starting around the turn of the millennium, and the filling of the area behind was performed from west to east to an approximate level of 2.0 m DVR90. Current 100 year extreme return water levels from storm surges are respectively 1.93 m DVR90 for Thyboron Harbor and 1.64 m DVR90 for Aarhus Harbor (Sorensen et al, 2013).

Measuring land subsidence

Data from the Sentinel-1a satellite are provided free of charge by the European Space Agency (esa.int) and via the European Earth Observation Program, Copernicus (copernicus.eu). This is coordinated and managed by the European Commission (ec.europa.eu). The satellite has been operational since 2014. In order to become useful for e.g., subsidence studies, sequences of Sentinel-1 data from repeated imagery over an area needs to

be processed (ESA, 2016). For the presented study, the image processing has been carried out by NORUT, NGU, and PPO.Labs (Larsen et al, 2006; Levinsen et al, 2016; Marinkovic et al, 2016). The data processing is performed using Persistent Scatterer Interferometry (PS-InSAR) (Ferretti et al, 2001; Ferretti et al, 2007). Basically, this means that each time the satellite passes over an area, a satellite radar signal is reflected on the ground and the return signal is measured. From the phase shift in the signal as a measure of time of travel, the distance between the satellite and the ground reflection point (PSI-point) is derived. In order for the radar signal to be reflected there must be natural reflection points on the ground like house corners or other constructions. As the spatial resolution of the Sentinel-1 image is 5*20 meters, this also means that each discrete point in the results may represent one or more reflection points within this area. Over time, and as the number of images in 'the stack' over an area increases, the coherence between individual points in the images may be used as a quality measure. Here, 27 images acquired in the period March 2015 – March 2016 over each of the two study locations have been used to infer average rates of vertical land movement. The short time series of images do not allow for any detailed interpretation of the averaged vertical land motion at individual PSI-points or of variations in subsidence over time, but results may reveal patterns of variation detected over Thyboron and Aarhus. Furthermore,

Data Source	Location	
	Thyboron	Aarhus
Sentinel-1A satellite	Mode: Interferometric Wide Swath Data period: 03/2015 – 03/2016 Track: 139 Burst: 20330 No. of images: 27 Satellite repeat cycle (days): 12 Image resolution (m): 5*20	Mode: Interferometric Wide Swath Data period: 03/2015 – 03/2016 Track: 139 Burst: 20366 No. of images: 27 Satellite repeat cycle (days): 12 Image resolution (m): 5*20
ERS2 satellite	Mode: Synthetic Aperture Radar Image Data period: 1995-2001 Track: 108 Frame: 2457 No. of images: 48 Satellite repeat cycle (days): 35 Image resolution (m): 5*25 (ESA Project, Id. 30907).	n/a
Precision leveling	Years: 2006, 2009, 2012, 2015 No. of benchmarks: 50 Reference: DK datum network	Year: 2012, 2015 No. of benchmarks: 145 Reference: Local

Table 1. Specification of data used for measurements of vertical land movement.

the rate at the individual PSI-points will be relative to one PSI-point of defined zero movement over each area. Finally, rates are given as a vertical 'line-of-sight' (LOS) displacement based on the angle of incidence of the satellite's radar signal. This angle is approximately 40 degrees for Sentinel-1, and must be multiplied by 1.3 to yield vertical rates of movement. Considering the short time series and the abovementioned limitation in interpretation, the results are not resolved into vertical and lateral changes over the period investigated. The relative uncertainty in subsidence rates are believed to be 'a few millimeters'. Over time and as longer time series of images become available, sub-millimeter accuracy may be anticipated in subsidence mapping based on Sentinel-1 data. Table 1 provides information about data used over the study locations.

In addition, images over Thyboron have been acquired from the ERS-2 satellite in the period 1995-2001 and thus prior to the quays and breakwater constructions at Aarhus. These images have been processed separately also by means of PS-InSAR methods as previously reported by

Sorensen et al (2016). As ERS-2 and Sentinel-1 data are referenced to different reflection points, results are not directly comparable. Details of data images and acquisition are given in Table 1.

Based on the initial suspicion of land subsidence, approximately 50 new height reference points were established in Thyboron in 2006. Subsequently, precise leveling campaigns have been carried out in respectively 2006, 2009, 2012, and 2015 and related to assumedly stable reference points in the Danish datum leveling network. Over this period, linear trends are imposed on the data to obtain rates of vertical land deformation (Sorensen et al, 2016; Vognsen et al, 2013). At the Aarhus study location a number of height benchmarks were established in 2012 and were consequently leveled in August 2012 and August 2015 for the purpose of this study. Despite consisting of only two campaigns, rates of subsidence have been calculated relative to three benchmarks at the western edge of the Aarhus study location which shows no internal variation in heights between the campaigns and are assumed to be stable. The leveling campaigns at both locations were carried out by the Agency for

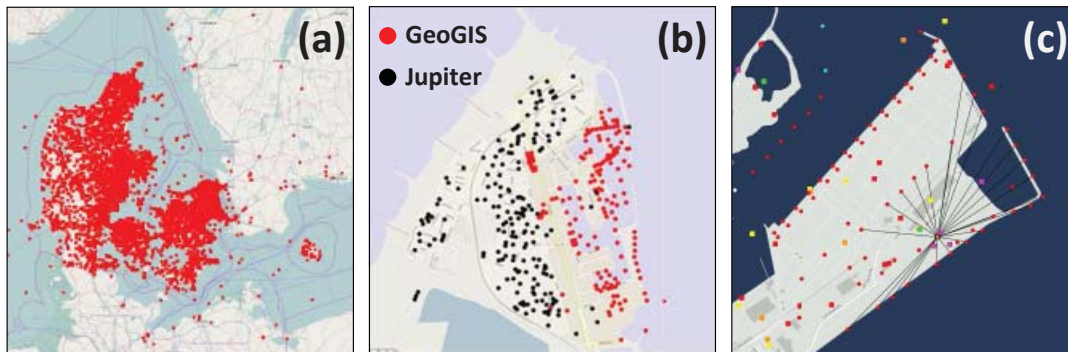


Figure 2. Projects included in the GeoAtlas database (a); availability of geological and geotechnical data over Thyboron (b), and available GeoAtlas data over Aarhus showing that a single project may contain many wells (black lines) (c).

Data Supply and Efficiency (sdfe.dk, formerly known as the Danish Geodata agency) which is also in charge of maintaining the national leveling network.

Compiling geological information

Geotechnical and geological surveys in Denmark have been performed by private consulting companies, public authorities, and universities. Knowledge about subsurface geology is important in construction works, where contractors require information about site-specific geotechnical properties. In general, difficult subsurface conditions increase the need of geotechnical information. Currently there is no common or shared national platform to get an overview of the total number of investigations. The national 'Jupiter' database (GEUS, 2016) contains 280,000 wells. Although many wells have little geologic or geotechnical information, the easily accessible and searchable on-line database is a useful source of information. A 'model database' hosted by the Geological Survey of Denmark and Greenland (GEUS) contains geological and hydrostratigraphic models at local, regional, and national scales produced mainly in relation to publicly funded groundwater and aquifer investigations and mapping (e.g. Ditlefsen et al, 2012). In the context of the presented work, a geological model is simply a 2-D or 3-D representation of the subsurface geology based on interpreted data. Existing models

in the database do not cover the study locations, however.

In addition to Jupiter, the largest private Danish geotechnical database, GeoAtlas (2016), has +60,000 'GeoGIS' projects concentrated around towns and infrastructure. GeoAtlas contains in excess of 200,000 wells, 500,000 measurements of shear strength, and 300,000 measurements of water content, and the density of projects in Denmark and over the two study locations is sketched in Figure 2. GeoAtlas is fully digitized with searchable and georeferenced pdfs at project level. Usually each well in a GeoAtlas project is associated with geographic coordinates as well as detailed geotechnical descriptions of the subsurface geology, groundwater levels and shear strengths as mentioned above. The two databases contain information based on different primary tasks and sectors: Jupiter is to a large extent based on and extended by public investigations related to groundwater and the environment and to research, whereas GeoAtlas projects have a more industrial scope related to construction works in the private sector. A combination of the two databases often provides data with a high spatial coverage. Various other companies hold geotechnical projects which have not been included in the presented work.

The available geotechnical information over Thyboron and Aarhus has been digitized by the authors to produce 3-D geological models. For Aarhus, the collection of data has been made

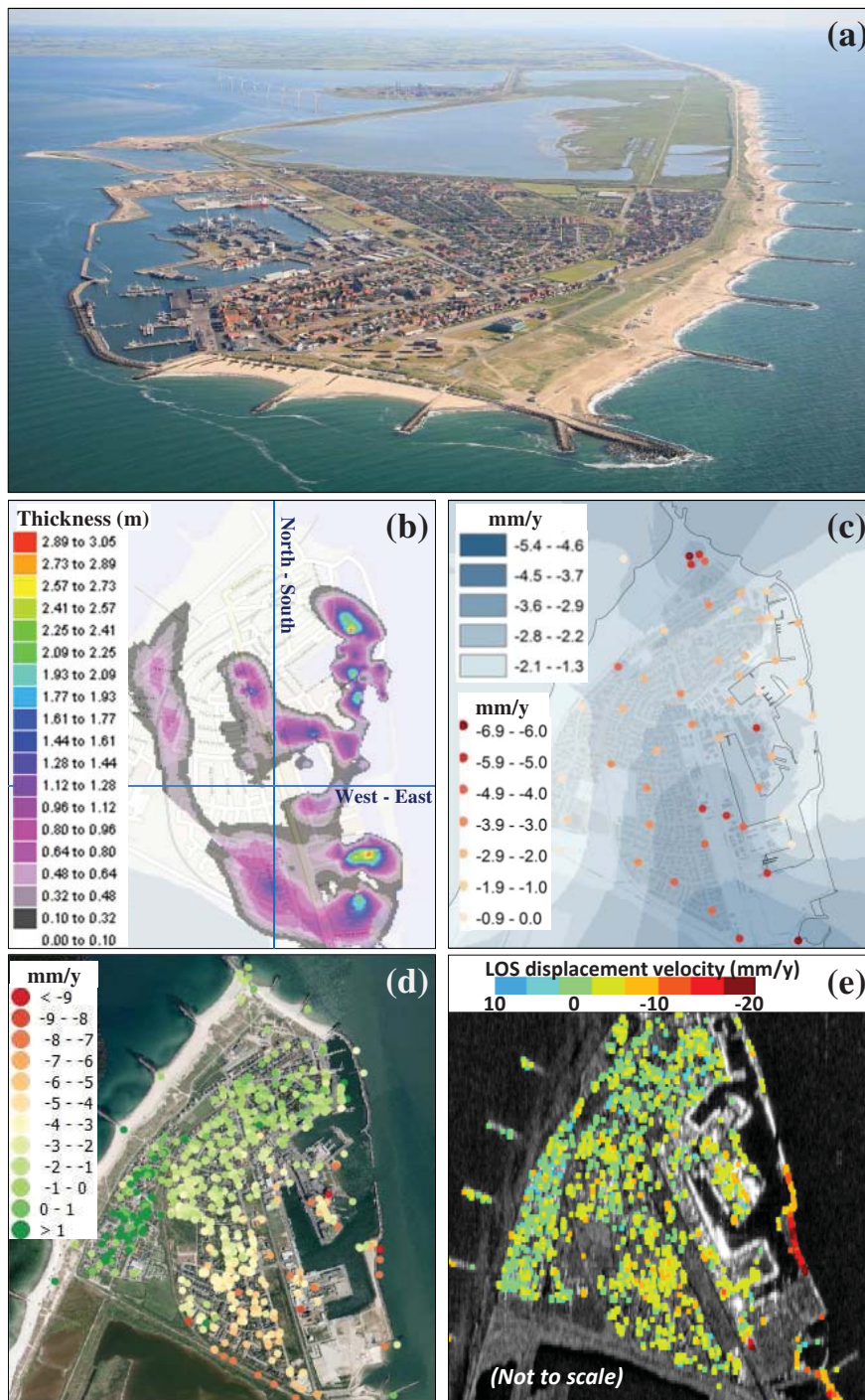


Figure 3. Thyboron: photo towards south (by courtesy of Hunderup Aerial Photography/Danish Coastal Authority)(a); isopach map of gyttja/soft sediments (b); measured and interpolated vertical rates of land movement (subsidence is negative) from precision leveling (2006-2015) (c); measured rates from ERS2 (1995-2001) satellite imagery (d), and measured 'line-of-sight' (LOS) rates from Sentinel-1(2015-2016) satellite imagery (e).

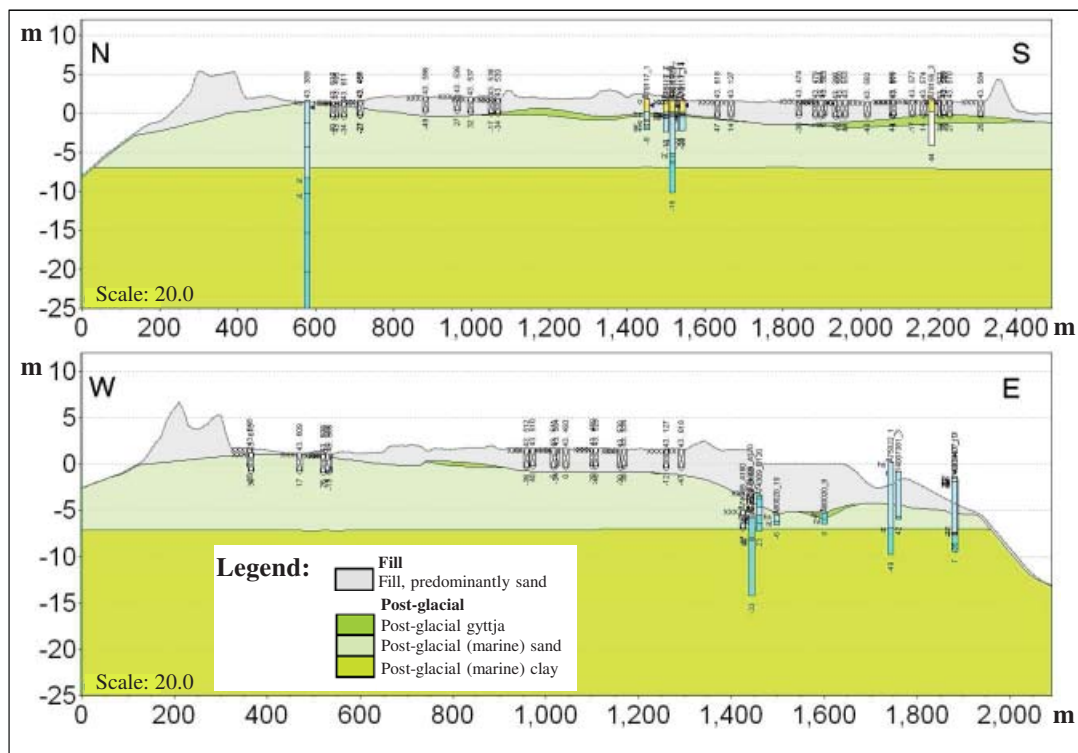


Figure 4. Geological profiles from Thyboron in North-South and West-East directions based on a 3-D geological model from digitized geotechnical archive information (positions of profile lines are shown in Figure 3b).

previous to and during the construction work. For Thyboron, many of the wells date back to the 1950's and before. Here, all geological information from the +200 wells has been transferred from the old analog reports to a digital form. Consequently, spatial interpretations of the geology have been made using the GEOScene3D.com software, which is an integrated 3-D geological modeling software. Depending on the density of wells, this interpretation contains uncertainties regarding the lateral extent and thicknesses of subsurface layers. Over Thyboron, Jupiter data mainly cover the residential western part of the town and GeoAtlas data cover the port and industrial areas. Some geotechnical information, e.g., later removal of material for port basin construction, is not representative of the present geology but may still support subsurface interpretation in the geological model.

RESULTS

As seen in Figure 4, the geological model of Thyboron shows Holocene marine clays ('Agger Clay') at depths of 6-30 m (positions of N-S and W-E profiles are shown in Figure 3b). Above this layer are marine sands as well as layers and lenses of gyttja/soft sediments. Geotechnical investigations do not entirely cover Thyboron, but the isopach map of soft sediments seen in Figure 3b indicates increasing thicknesses towards south and east. Above the gyttja layer is approximately 2-4 m of fill material including artificially created or stabilized dunes towards north and west. The relative subsidence patterns from precise leveling 2006-2015 seen in Figure 3c, and from ERS-2 imagery 1995-2001 in Figure 3d (both figures are adapted from Sorensen et al, 2016) show a good agreement to indicate net subsidence rates of 5-7 mm/y towards SE and more stable conditions towards west. Sentinel-1 results (2015-2016) indicate the

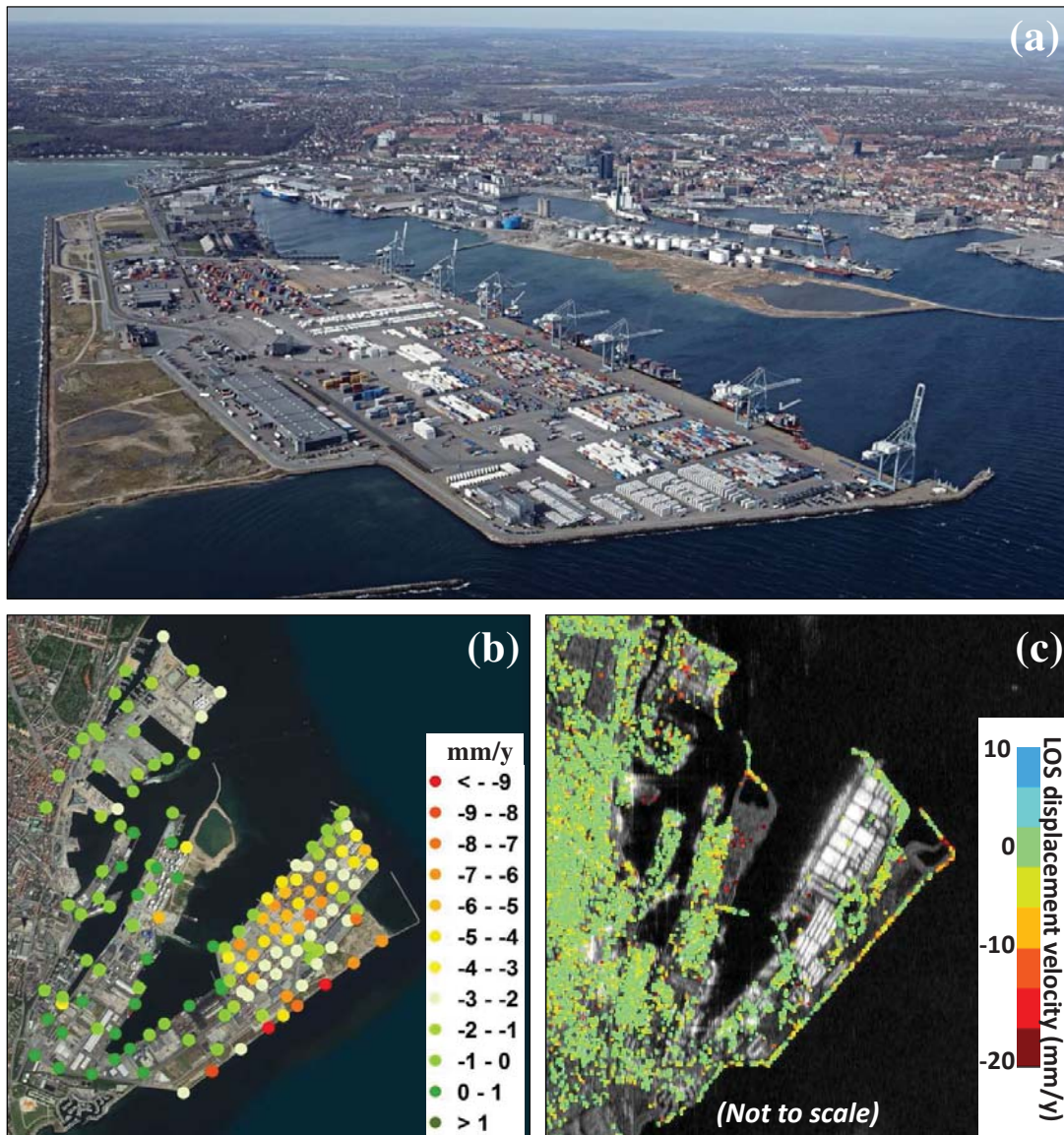


Figure 5. Aarhus: photo of Aarhus East Harbor towards SW with the city of Aarhus in the background (by courtesy of Mr. Joergen Weber and Port of Aarhus) (a); measured vertical rates of land movement (subsidence is negative) from precision leveling (2012-2015) (b); and measured 'line-of-sight' (LOS) rates from Sentinel-1 (2015-2016) satellite imagery (c).

same geographical pattern of relative vertical displacement rates. In addition, the subsidence of the recently constructed or renovated eastern harbor breakwaters is significant as shown in Figure 3e based on the radar geometry (yielding a different scale of the map compared to the georeferenced leveling and ERS-2 GIS-maps). From a visual inspection, subsidence rates exceeding 5

mm/y are thus generally found in the areas with thick layers of soft sediments. Although additional causes of subsidence may prevail, the ongoing subsidence seems related to the thickness of soft sediments and to the thickness and time of landfill. Subsidence rates may decline over time, but a more detailed evaluation of this has not been performed within the presented study.

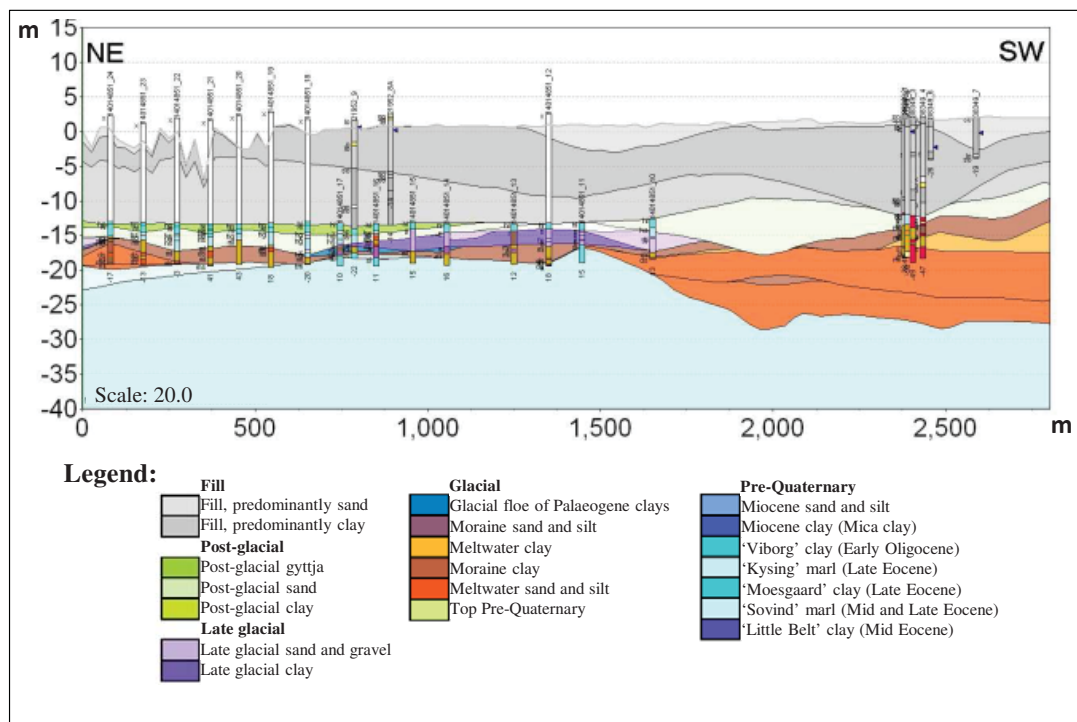


Figure 6. Geological profile in a 2,800 m (NE-SW) transect along the eastern breakwater of Aarhus East Harbor based on a 3-D geological model from digitized geotechnical archive information (not all legend types are present in the profile).

At Aarhus, the Sentinel-1 results shown in Figure 5c reveal significant relative subsidence along the outer southeast breakwater. A visual inspection unveil the fact that the inferred subsidence from Sentinel-1 data shows good spatial correlation to the subsidence rates of benchmarks measured from precision leveling in 2012 and 2015. Over this period, as seen in Figure 5b, subsidence rates of 3-10 mm/y were recorded along the entire breakwater except in a few “hot spots” with a much larger subsidence. The southern third of the breakwater is located at about 10 m water depth and is based on deposits of postglacial sand and glacial or late glacial clays and sands as shown in the 2-D geological model profile in Figure 6. However, at level -30 m these relatively competent deposits are underlain by Palaeogene clay of extreme plasticity (Okkels et al, 2011) with relatively poor soil properties to a great depth. The northern two thirds of the breakwater with the largest subsidence rates cf. Sentinel-1 is located at a

depth of approximately 13 m after replacement of a 1-2 m thick and highly compressible post-glacial top layer (gyttja and soft organic clays) with sand fill. The fill is based on approximately 5 m of deposits consisting of postglacial sand and late glacial and glacial sands and clays with embedded glacial floes of high plasticity Palaeogene clays. From elevation -20 m, i.e., about 10 m higher than below the southern part of the breakwater, the predominantly competent deposits are underlain by Palaeogene clay as well.

The breakwater filling consists of competent materials of sand, gravel, stone and blocks and the subsidence in the filling itself is small and insignificant. By contrast, the weight of the breakwater and the subsequent filling for the harbor behind the breakwater has resulted in load-dependent subsidence of the breakwater from consolidation and subsurface creep. This subsidence is ongoing and will continue for a long time, although presumably at a diminishing rate. In the

northeastern part of the breakwater, where the filling is largest and the Palaeogene clay is situated at the shallowest depth, the risk of subsidence “hot spots” is largest. This is most likely caused by either consolidation or unsatisfactory stability conditions due to embedded glacial floes of Palaeogene clays in the Quaternary strata, or, soft sediments left below the filling. Furthermore, current subsidence rates reflect that the filling for the breakwater and the reclaimed land behind is performed over a ten year period.

DISCUSSIONS

The discussion is divided into three parts. Firstly, results on geology and subsidence are discussed. Secondly, the relevance of bringing in such information in climate adaptation in Denmark is discussed, and finally perspectives for a national setup for subsidence monitoring are discussed.

Interpreting subsidence and geology interplay

The use of satellite imagery and leveling combines a ‘technology now becoming mainstream’ with a well-established one: leveling offers the highest precision to a very limited number of height benchmarks, whereas PS-InSAR offers many point measures at a lower precision and accuracy. Compared to these, airborne Lidar-methods produces e.g. digital elevation models (DEM’s) with a very high resolution but at a comparatively lower accuracy. In order to infer subsidence rates of a few mm/y which is the focus in the presented study, current Danish DEMs do not offer an alternative to satellite measurements for subsidence mapping. Precision leveling at the investigated locations points to areas of subsidence that are also discernible in the Sentinel-1 data and exhibit similar rates of subsidence. At Thyboron, the ERS2 data show the same pattern of subsidence as the Sentinel-1 data. Due to relatively large differences in magnitude of the vertical displacement rates measured within each location, the PS-Insar method offers credible subsidence rates at a high

spatial and temporal resolution despite the short data series. As such the method is superior to leveling regarding both the acquisition of data and potential repetition of calculations as more data become available. However, the calculated rates are relative and must be defined in relation to some arbitrary point in the map, which may or may not show stability in absolute terms. Small relative subsidence rates within an area are difficult to measure and interpret, i.e., it is not possible yet to identify whether an entire town is subsiding a few mm/y compared to the surrounding areas. Leveling is accurate and benchmarks are well defined and referenced. However, leveling is also laborious and benchmarks yield no information, strictly speaking, about the vertical movement of surrounding areas. In addition, repeated leveling data are rarely available for calculations of past and ongoing land subsidence. As the data from Thyboron and Aarhus show, subsidence can be inferred from leveling and referenced to a national datum system, however. As such the two methods complement each other in identifying areas of subsidence. In order to merge the two methods and to reference rates of subsidence from satellite measurements in absolute terms and with a high accuracy, it is necessary to perform detailed and repeated measurements (Karila et al, 2013). As a means to establish the connection between radar satellite results and the datum leveling network, artificial corner reflectors may be deployed (e.g. Marinkovic et al, 2007). In continuation of the presented study, such reflectors are in the progress of being deployed in Thyboron with an ambition to construct a corner reflector network over Denmark. The reflectors must be placed in areas without other constructions and act as unique identifiers in satellite images.

Compilations of recent and historic geotechnical investigations into 3-D geological models potentially allow for a spatial and depth-integrated interpretation of vertical surface changes expected or measured. When combined, the isopach map over Thyboron and the leveling, ERS-2 and

Sentinel-1 subsidence maps indicate a spatial relation between the magnitude of subsidence and thickness of soft sediments. Knowledge about subsidence rates in areas of the town with no geotechnical information may be used to make pre-assumptions about subsurface properties. Likewise, geotechnical information may be utilized to make initial assumptions about future subsidence in areas with no PSI-points, e.g., previous to urbanization. However, such relations need further exploration for Danish conditions. The connection between subsidence and geology is well-described in the literature but is new in a Danish climate adaptation context. Here, current subsidence rates may be projected into the future based on the geotechnical knowledge, and the near real-time monitoring of surface changes made possible by Sentinel-1 may enhance the consequence modeling of changes in surface run-off and groundwater management practices or make more realistic flooding scenarios, for instance.

Geological models and the utilization of satellite imagery extend the scale from construction site specific monitoring of subsidence and geotechnical investigations to larger areas typical of consideration in urban climate adaptation and in flood risk reduction schemes. The collection and digitization of geotechnical archives is costly, and the calculations based on the freely available Sentinel-1 data for subsidence mapping are by no means trivial or inexpensive. A demand for such products within industry, public administration, and/or academia must therefore be supported by use cases such as the ones presented here in order to advance their use and applicability in Denmark.

Subsidence monitoring in climate adaptation

Danish areas of land subsidence have not been systematically mapped, but subsidence is becoming recognized as a potentially significant factor in relation to flood risk reduction and climate adaptation with national (DCA, 2013; DCA, 2016 p. 38) and local authorities (e.g. Lemvig Municipality, 2014). Given the current rates of subsidence at

Thyboron and Aarhus, the areas' liability to floods will increase over the coming decades even without sea level rise. Subsidence rates may be negligible in many coastal areas, whereas they may be three times larger than the rise in mean sea level in others. Subsidence should thus be considered and included in flood risk assessments, e.g. in relation to the implementation of the EU Floods Directive and in municipal adaptation plans. This accentuates the need of reliable subsidence data as pointed out by Broge et al (2013) with a focus on the urbanized, low-lying coastal areas most liable to experience subsidence. From the authors' correspondence with several municipal authorities, subsidence is suspected or is known to occur in several coastal towns in addition to Thyboron and Aarhus. However, this knowledge remains mostly "unofficial", is unquantified and is thus absent in management and planning. In order to get an overview of local area magnitudes of subsidence, it is suggested to publicly finance a first national, or, sub-national mapping using Sentinel-1 data. Based on this mapping, the current and future needs for subsidence monitoring and data services can be discussed and established between private and public sector end-users. Subsequently, subsidence maps may potentially become part of regional or national open data schemes, or, products may e.g. be purchased by individual companies or municipalities in need of updated information. In both cases, a service must be set up to deliver the calculations and maps in useful formats to the end-users.

The compilation of geotechnical archives into geological models is a huge task that involves a multitude of private and public stakeholders. So far, geotechnical and geological information relate mainly to construction works and groundwater modeling and with little attention paid to climate adaptation and flood modeling. A starting point for the use of existing and development of new geological models could be the municipal level as the municipalities possess insights about previous investigations and have the possibility to gather

geotechnical information from companies and consultants. Still, the use for water-related adaptation purposes of geologic models, in relation to but not restricted to subsidence mapping, needs to be further explored by the owners of geotechnical archives, the municipalities and science.

Perspectives of end-user products

To become effective subsidence data and geologic models must be integrated for use in coastal climate adaptation at the end user level. More work is needed to develop methods for tying InSAR based land movement monitoring to precision leveling benchmarks where absolute elevation is known with the highest possible accuracy. Furthermore, there is a need to investigate how subsidence data through interpolation techniques may be enhanced by geotechnical data and vice versa. In addition, these must relate to other data and climate change indices. This includes information about projections of sea level rise, extreme precipitation, groundwater levels, surface runoff, flood risk, town planning etc. and includes also some measures of uncertainty to be accounted for. By gradually detailing the geological knowledge and being given access to monitor and project surface changes, much of the uncertainty related to future land subsidence can be eliminated. In addition, undesired subsidence effects from e.g., groundwater extraction or construction works may be dealt with or avoided. In addition to national authorities and municipal administrations within groundwater, planning, the environment, and adaptation; water and wastewater utility companies, port authorities, larger private enterprises, and consulting companies may be relevant stakeholders and users of data. The construction of a climate decision support system related to subsidence and geology must therefore be based on the diverse needs of the stakeholders and must share knowledge relevant to all of these. Also, the system must be dynamic and operational to the end users and to some extent be capable of

predicting effects of system changes on future subsidence.

A subsidence map may serve as a starting point to detail the current pattern of land movement within an area. Secondly, geotechnical data may be compiled for focus areas in order to interpret the causes and magnitudes of change. Based on this, municipal decisions may be made to either mitigate or to further monitor changes and/or to collect additional geotechnical data. Larger systems' changes like constructions, groundwater withdrawal, or adaptation measures that may affect ground stability may be assessed and included in the decision support before implementation. By taking climate adaptation as a pivotal point of collaboration, this allows individual stakeholders to utilize and use data in more detail and still maintain a relatively simple shared decision support for municipal climate adaptation to be operated by non-experts, and to feed this with knowledge from the individual sectors. As a provider of geographic data - potentially including subsidence maps in the future, the Agency of Data Supply and Efficiency under the Danish Ministry of Energy, Utilities and Climate, may play an active role as the national authority guiding the use of subsidence maps and securing feed-back mechanisms between the users of the decision support system and the downstream services of the Copernicus program.

CONCLUSION

Knowledge about land subsidence and geology may advance coastal climate adaptation. Subsidence mapping from Sentinel-1 imagery and geological models based on geotechnical archives have been presented for two Danish study locations. Results point to the added value of bringing this information together in the assessment of coastal climate change impacts. The monitoring and interpretation of land subsidence processes that may affect future liability to floods is greatly improved from the inclusion of geotechnical knowledge. More interdisciplinary work is necessary to gain a deeper

understanding of the connected and integrated hazards and climate change impacts in coastal areas. Still, there is no national overview of land subsidence in Denmark. This is a hindrance to the evaluation of extent and scale of subsidence and in the provision of optimal adaptation measures by affected municipalities.

ACKNOWLEDGEMENTS

The paper contains modified Sentinel data. The European Space Agency and the Copernicus program are acknowledged for providing ERS-2 and Sentinel-1 satellite data. Dr. Yngvar Larsen (NORUT, Norway), Dr. Petar Marinkovic (PPO.Labs, the Netherlands) and Dr. John Dehls (NGU, Norway) are acknowledged for processing the satellite imagery and permitting use of the results. Thanks to Ms. Mette H. Mortensen (Geo) and Ms. Britta Bockhorn (Geo) for assistance in preparing the geological models, and Mr. Karsten Vogensen (SDFE) for leading the precise leveling campaigns. The authors also would like to thank the anonymous reviewers for their valuable comments and suggestions to improve the final manuscript. Co-funding for the research presented was kindly provided by Innovation Fund Denmark (Grant no. 1355-00193).

References

- Binzer, K. and J. Stockmarr (1994). *Geological Map of Denmark, 1:500.000. Pre-Quaternary surface topography of Denmark*. Map series no. 44. Copenhagen: GEUS. http://pubs.geus.net/Danmark/Prekvarter/hojdeforhold/DGU_KORT_SERIE_NR_44.pdf, http://data.geus.dk/geusmap/?-mapname=denmark#layers=praktvartaer_hojdeforhold
- DCA (Danish Coastal Authority) (2013). *Kortlægning af fare og risiko for oversvømmelse. Metoderapport. EU's oversvømmelsesdirektiv (2007/60/EF), plantrin 2*. Danish Coastal Authority, the Ministry of Transportation, Copenhagen, Denmark. <http://docplayer.dk/3969520-Kortlaegning-af-fare-og-risiko-for-oversvoemmelse.html>
- DCA (Danish Coastal Authority) (2016). *Kortlægning af erosion og oversvømmelse. Metoderapporten for kortlægning af faren for erosion og oversvømmelse samt de potentielle skadesomkostninger. Kystdirektoratet, Lemvig*. Appendix to "Kystanalyse", Danish Ministry of Environment and Food, Copenhagen, Denmark. <https://www.masterpiece.dk/UploadetFiles/10852/36/Kortl%C3%A6gningaferosionogoversv%C3%B8mmelse.pdf>
- Ditlefsen, C., Gausby, M., Salomonsen, J. and M. Hansen (2012). *Vejlledning i anvendelse af Modeldatabasen*, Geo-vejledning 9, GEUS, Copenhagen. <http://jupiter.geus.dk/ModelDBDoc/VejledningIAnvendelsenAfModeldatabasen.pdf>
- Dronkers, J. and T. Stojanovic (2016). Socio-economic Impacts - Coastal Management and Governance in Quante, M. and F. Colijn (eds.) *North Sea Region Climate Change Assessment, Regional Climate Studies*. Springer Open, pp. 475-488. DOI 10.1007/978-3-319-39745-0_19
- ESA (2016). Sentinel-1 SAR User Guide. European Space Agency. <https://sentinels.copernicus.eu/web/sentinel/user-guides/sentinel-1-sar> (Accessed 10/10/2016)
- Ferretti, A., Prati, C. and F. Rocca (2001). Permanent scatterers in SAR interferometry. *IEEE Trans. Geosci. Remote Sens.*, 39(1), 8-20.
- Ferretti, A., Giuliano, S., Barzaghi, R., Borghi, A., Musazzi, S., Novali, F., Prati, C. and F. Rocca (2007). Submillimeter Accuracy of InSAR Time Series: Experimental Validation. *IEEE Trans. Geosci. Remote Sens.*, 45 (5), 1142-1153. DOI 10.1109/TGRS.2007.894440
- GeoAtlas (2016). "Database of geotechnical surveys in Denmark (GeoAtlas)," in Private Geotechnical Database (Copenhagen: Geo).
- GEUS (Geological Survey of Denmark and Greenland) (2016). Jupiter - Denmark's Geological and Hydrological Database. GEUS, Copenhagen. <http://www.geus.dk/DK/data-maps/jupiter/Sider/default.aspx>
- Gomez, N., Mitrovica, J. X., Huybers, P. and P. U. Clark (2010). Sea level as a stabilizing factor for marine-ice-sheet grounding lines. *Nature Geosciences*, 3(12), 850-853. DOI 10.1038/ngeo1012
- Grinsted, A., Jevrejeva, S., Riva, R. E. and D. Dahl-Jensen (2015). Sea level rise projections for northern Europe under RCP8.5. *Clim. Res.*, 64, 15-23. DOI 10.3354/cr01309
- IPCC (Intergovernmental Panel on Climate Change) (2013). *Climate Change 2013: The Physical Science Basis. Contribution of Working Group I to the Fifth Assessment Report of the Intergovernmental Panel on Climate Change*, eds T. F. Stocker, D. Qin, G. -K. Plattner, M. Tignor, S. K. Allen, J. Boschung, A. Nauels, Y. Xia, V. Bex, and P. M. Midgley (Cambridge, UK; New York, NY: Cambridge University Press), 1535.
- IPCC (Intergovernmental Panel on Climate Change) (2014). *Climate Change 2014: Impacts, Adaptation, and Vulnerability. Part B: Regional Aspects. Contribution of Working Group II to the Fifth Assessment Report of the Intergovernmental Panel on Climate Change*, eds Barros, V. R., C.B. Field, D. J. Dokken, M. D. Mastrandrea, K.J. Mach, T.E. Bilir, M. Chatterjee, K.L. Ebi, Y.O. Estrada, R.C. Genova, B. Girma, E.S. Kissel, A.N. Levy, S. MacCracken, P.R. Mastrandrea, and L.L. White (Cambridge, UK; New York, NY: Cambridge University Press), 688.
- Jevrejeva, S., Grinsted, A. and J. C. Moore (2014). Upper limit for sea level projections by 2100. *Environ Res Lett*, 9, 104008. DOI 10.1088/1748-9326/9/10/104008
- Karila, K., Karjalainen, M., Hyyppä, J., Koskinen, J., Saaranen, V. and P. Rouhiainen (2013). A Comparison of Precise Leveling and Persistent Scatterer SAR Interferometry for Building Subsidence Rate Measurement.

- ISPRS Int. J. Geo-Inf., 2, 797-816; doi:10.3390/ijgi2030797
- Larsen, Y., Engen, G., Lauknes, T. R., Malnes, E. and K. A. Hogda (2006). *A generic differential interferometric SAR processing system, with applications to land subsidence and snow-water equivalent retrieval*. In: Fringe 2005 Workshop (Vol. 610, p. 56).
 - Lemvig Municipality (2014). *Klimatilpasningsplan 2014-2017*. Lemvig: Lemvig Municipality. http://www.lemvig.dk/Files/Files/Teknik_Miljo/Planer%20og%20projekter/Klimatilpasningsplan/klimatilpasningsplan.pdf
 - Levinsen, J. F., Broge, N. H., Sorensen, C., Dehls, J., Marinkovic, P. and Y. Larsen (2016). "Are we drowning? Urban land subsidence in Thyboron, Denmark, from ERS-2 and Sentinel-1 imagery and precision leveling." *Proc. ESA Living Planet Symposium* (May 2016, Prague, Czech Republic). Paper 629.
 - Marinkovic, P., Ketelaar, G., van Leijen, F. and R. Hanssen (2007). Insar Quality Control: Analysis of Five Years of Corner Reflector Time Series. *Proc. of FRINGE 2007 Workshop*, Frascati, Italy, 26-30 November 2007 (ESA SP-649, February 2008).
 - Marinkovic, P., Larsen, Y., Levinsen, J. F., Broge, N. H., Sorensen, C. and J. Dehls (2016). "Something is "subsiding" in the state of Denmark - Operational prospects for nationwide subsidence mapping with Sentinel-1". *ESA Living Planet Symposium* (May 2016, Prague, Czech Republic). Paper 2518. <http://www.slideshare.net/petarmar/something-is-subsiding-in-the-state-of-denmark-operational-prospects-for-nationwide-subsidence-mapping-with-sentinel1>
 - Nerem, R. S., Chambers, D., Choe, C. and G. T. Mitchum (2010). "Estimating Mean Sea Level Change from the TOPEX and Jason Altimeter Missions." *Marine Geodesy* 33, no. 1 supp 1: 435.
 - Nicholls, R. J. (1995). Coastal megacities and climate change. *Geo J.*, 37, 369-379.
 - Okkels, N., Boedker, L. and B. Knudsen (2011). Long-term settlement observations of a bridge foundation on clay of very high plasticity. *Proc. XV European Conference on Soil Mechanics* (Athens, Greece). 423-428. <http://www.geo.dk/media/1173/long-term-settlement-observations-of-a-bridge-foundation-on-clay-of-very-high-plasticity.pdf>
 - Pedersen, S. A. S., Hermansen, B., Nathan, C. and L. Tougaard (2011). *Digitalt kort over Danmarks jordarter 1:200.000, version 2. Geologisk kort over de overfladenære jordarter i Danmark*. Denmark and Greenland Geological Survey Report no. 2011/19, GEUS, Copenhagen. http://pubs.geus.net/Danmark/jordartskort/Jordart_200000_v2_beskriv.pdf http://data.geus.dk/geusmap/?mapname=denmark#layers=jordartskort_200000
 - Peltier, W. R., Argus, D. F. and R. Drummond (2015). Space geodesy constrains ice age terminal deglaciation: The global ICE-6G_C (VM5a) model, *J. Geophys. Res. Solid Earth*, 120, 450-487. DOI 10.1002/2014JB011176
 - Piontkowitz, T. and C. Sorensen (2011). *Forslag til udpejning af risikoområder på baggrund af en foreløbig vurdering af oversvømmelsesrisikoen fra havet, fjorde eller andre dele af søterritoriet*. Technical background report, Danish Coastal Authority, Lemvig, Denmark. www.masterpiece.dk/UploadetFiles/10852/36/Baggrundsrapport_KDI_april2011.pdf
 - Slangen, A. B. A., Adloff, F., Jevrejeva, S., Leclercq, P. W., Marzeion, B., Wada, Y. and R. Winkelmann (2016). A Review of Recent Updates of Sea-Level Projections at Global and Regional Scales. *Surv Geophys*, 1-22. DOI 10.1007/s10712-016-9374-2
 - Sorensen, C., Broge, N. H., Molgaard, M. R., Schow, C. S., Thomsen, P., Vognsen, V. and P. Knudsen (2016). Assessing future flood hazards for adaptation planning in a northern European coastal community. *Front. Mar. Sci.* 3:69. DOI 10.3389/fmars.2016.00069
 - Sorensen, C., Madsen, H. T. and S. B. Knudsen (2013). *Højvandsstatistikker 2012*. Lemvig: Danish Coastal Authority. www.masterpiece.dk/UploadetFiles/10852/36/Højvandsstatistikker_2012_rev_15.07.2013.pdf
 - UNFCC (United Nations Framework Convention on Climate Change) (2016). *Report of the Conference of the Parties on its twenty-first session, held in Paris from 30 November to 13 December 2015. Addendum. Part two: Action taken by the Conference of the Parties at its twenty-first session (COP21: Paris Agreement) (FCCC/CP/2015/10/Add.1)*. Geneva, Switzerland: United Nations Office (29/01/2016). http://unfccc.int/files/meetings/paris_nov_2015/application/pdf/paris_agreement_english.pdf
 - Vognsen, K., Sonne, I. B., Broge, N. H., Sorensen, C. and P. Knudsen (2013). *Metode til Fremskrivning af Oversvømmelsesomfang ved Stormflod*, Vol. 16. Technical Report Series, Copenhagen: Danish Geodata Agency. ftp://ftp.kms.dk/download/Technical_Reports/GST_Technical_Report_16.pdf
 - Wong, P. P., Losada, I. J., Gattuso, J. P., Hinkel, J., Khattabi, A., McInnes, K. L., Saito, Y. and A. Sallenger (2014). "Coastal systems and low-lying areas," in *Climate Change 2014: Impacts, Adaptation, and Vulnerability. Part A: Global and Sectoral Aspects. Contribution of Working Group II to the Fifth Assessment Report of the Intergovernmental Panel on Climate Change*, eds C. B. Field, V. R. Barros, D. J. Dokken, K. J. Mach, M. D. Mastrandrea, T. E. Bilir, M. Chatterjee, K.L. Ebi, Y.O. Estrada, R.C. Genova, B. Girma, E.S. Kissel, A.N. Levy, S. MacCracken, P.R. Mastrandrea, and L.L. White (Cambridge; New York, NY: Cambridge University Press), pp. 361-409.
 - Zhang, X. and J. A. Church (2012). Sea level trends, interannual and decadal variability in the Pacific Ocean. *Geophysical Research Letters*, 39(21). DOI 10.1029/2012GL053240